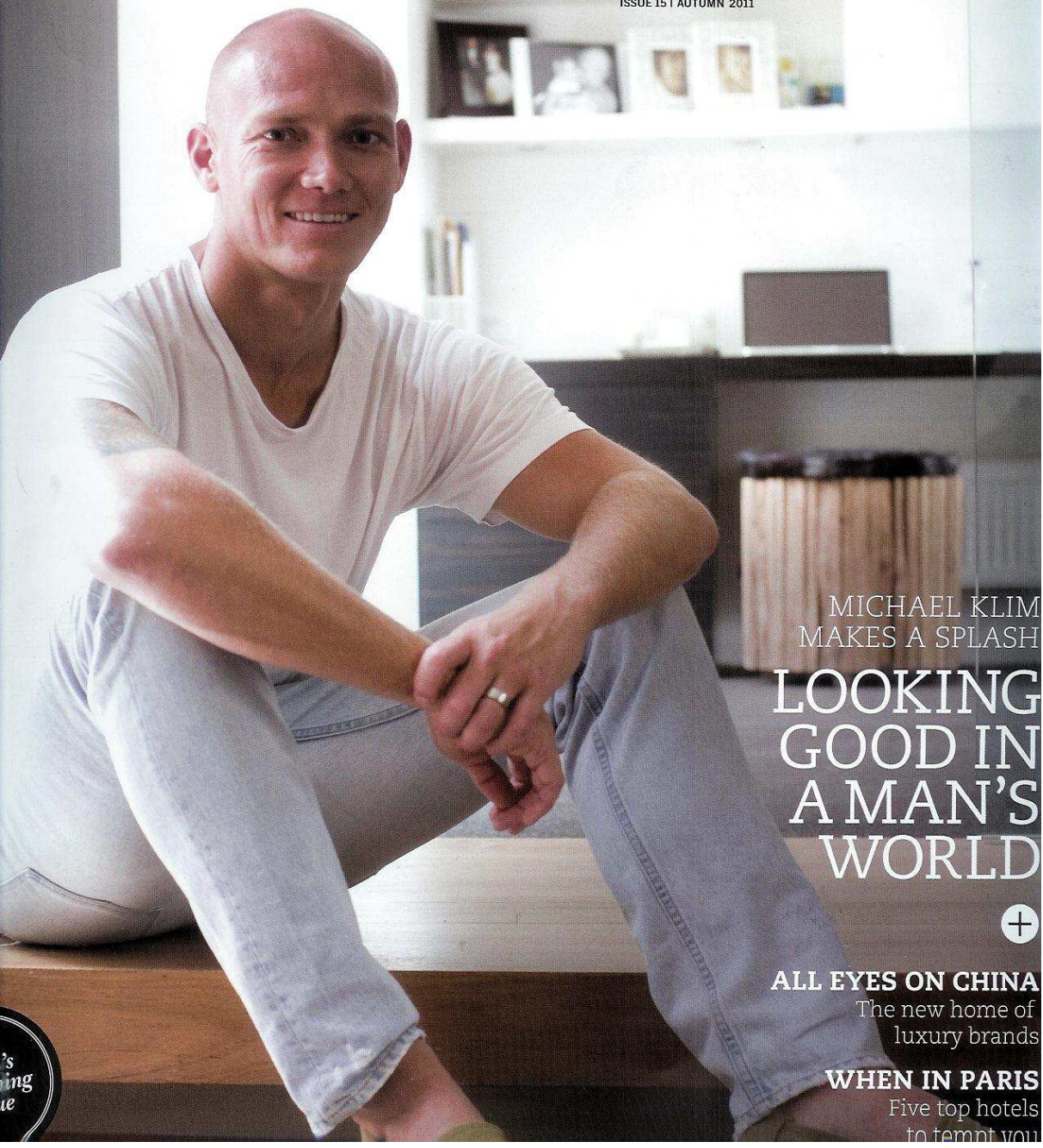


watch luxe | car luxe | tech luxe | design luxe | travel luxe | property luxe

Life & Leisure

LUXURY

ISSUE 15 | AUTUMN 2011



MICHAEL KLIM
MAKES A SPLASH

LOOKING
GOOD IN
A MAN'S
WORLD



ALL EYES ON CHINA

The new home of
luxury brands

WHEN IN PARIS

Five top hotels
to tempt you

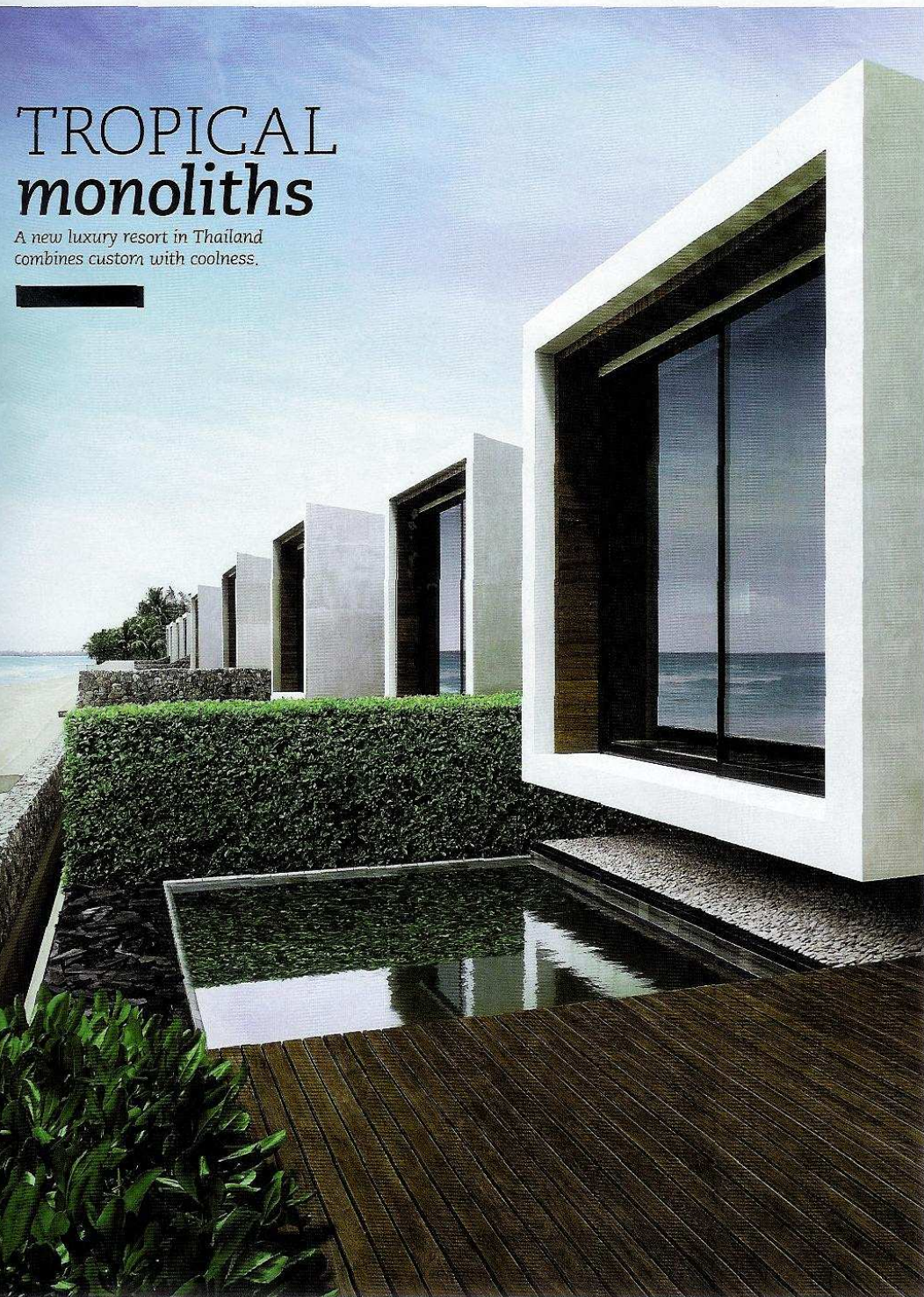
's
ing
ie

lifetime

• clothing luxe • watch luxe • menswear luxe • travel luxe • dining luxe • wine luxe

TROPICAL monoliths

A new luxury resort in Thailand
combines custom with coolness.



S

la
ai
a
b
L
th
FI

been designed to market, with their resort complex of 36 low-rise, glass-uninterrupted ocean-view villas. Each villa has a 24-hour butler service.

Casa de la Flor in Sombong Dowpis, Thailand. The European bathroom was busy creating new. The latest project was with contemporary relaxation in a private villa.

The designers: Virajsilp and Boon based firm VaSLa sophisticated more certainly, but still in a natural environment. With minimalist structure perfectly pampered and unobtrusive to the natural landscape.

Solar panels are used in the resort's design, with solar panels used as a water feature.

The complex, a group of villas, features a spa, library and La Aru Thai and international restaurants.

KATARINA KROSLAK